



## Linear Indirect



DATA SHEET



### Product information

The new Tungsram Linear Indirect range is designed to deliver efficient lighting for commercial and education applications. These efficient lighting fixtures have a long life and deliver a remarkable efficacy (up to 136lm/W), allowing for lower maintenance and operating costs.

### Features & benefits

- Visually appealing illumination with CRI 80+
- High luminous efficiency with minimal glare (<UGR19) due to indirect reflector solution
- Provides strong horizontal and vertical illuminance
- Available in two length: 1250 and 1650 mm
- Optional Static control
- Energy efficient replacement for traditional LFL solutions
- Long rated life & low maintenance: L90B50 75,000+ hours
- Available in 3000K and 4000K
- 4 different wattages from 30W to 50W and up to 136lm/W efficacy
- PF  $\geq$  0.92
- Operating temperature +5°C to +35°C
- 220-240V, 50/60Hz



### Installation

Surface and suspended mounting (optional). 2 mounting brackets are included with each fixture. Suspension wire kits are also available.

### Electrical and gear compartment

- Thermal overload protection shuts down the luminaire when system temperatures exceed designed operating conditions.
- THD: <20%

### Structures and materials

- Fully recyclable heatsink
- IP Rating: IP20

### Application areas



Low bay open ceiling applications



Industrial / Warehouse



Retail

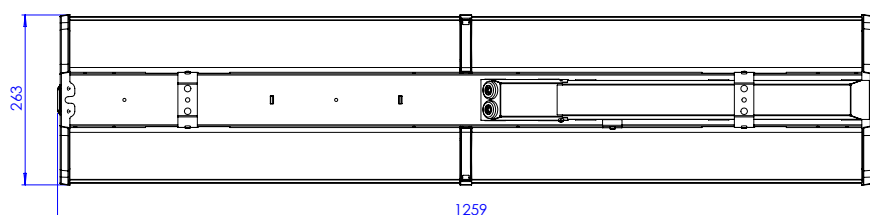
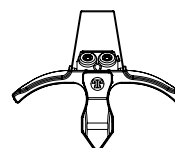
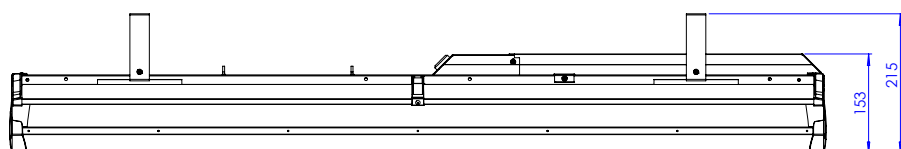


Commercial

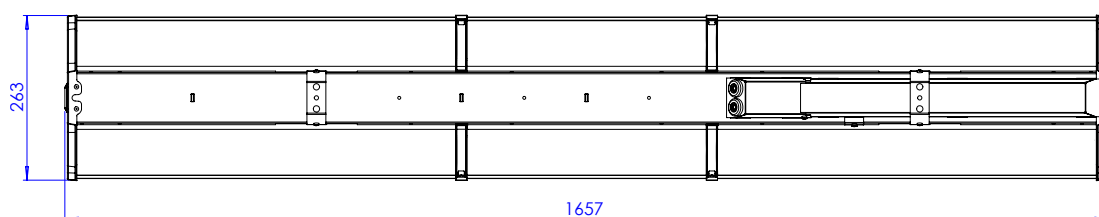
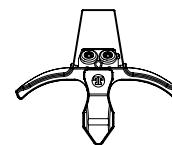
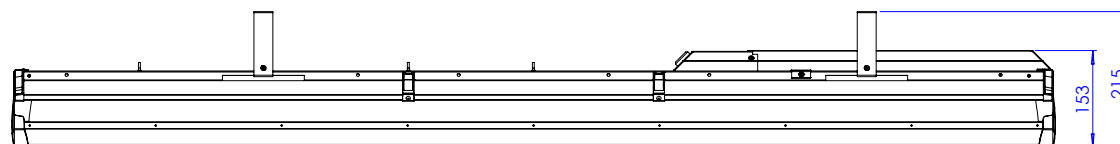
## Specification summary

Product Code	Description	Wattage (W)	Lumen Output (lm)	Efficacy (lm/W)	CCT (K)	CRI	Control	Input Current (mA)
93119115	TU LINEAR INDIRECT 30W 12 830 S11 ST G1B	30	4 000	133	3000	≥80	Static	136
93119116	TU LINEAR INDIRECT 30W 12 840 S11 ST G1B	30	4 000	133	4000	≥80	Static	136
93119117	TU LINEAR INDIRECT 38W 12 830 S11 ST G1B	38	5 000	132	3000	≥80	Static	175
93119118	TU LINEAR INDIRECT 38W 12 840 S11 ST G1B	38	5 000	132	4000	≥80	Static	175
93119119	TU LINEAR INDIRECT 40W 16 830 S11 ST G1B	40	5 300	133	3000	≥80	Static	181
93119120	TU LINEAR INDIRECT 40W 16 840 S11 ST G1B	40	5 300	133	4000	≥80	Static	181
93119121	TU LINEAR INDIRECT 50W 16 830 S11 ST G1B	50	6 800	136	3000	≥80	Static	227
93119122	TU LINEAR INDIRECT 50W 16 840 S11 ST G1B	50	6 800	136	4000	≥80	Static	227

## Dimensions (mm)



Wattage: 30W, 38W  
Weight: 4.8kg



Wattage: 40W, 50W  
Weight: 5.9kg

## Regulatory and standards

**Regulatory mark:** CE, UKCA

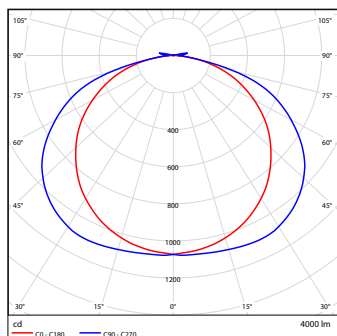
**Regulations:** 2014/35/EU, 2014/30/EU, 2011/65/EU, (framework 2009/125/EC) EU/1194/2012 amended by EU 2015/1428, (framework 2010/30/EC) 874/2012 and 518/2014\*, 2012/19/EU\*

**Harmonised standards:** EN 60598, EN 62493, EN 61547, EN55015, EN 61000, look for CE Declaration of Conformity and Technical File for details

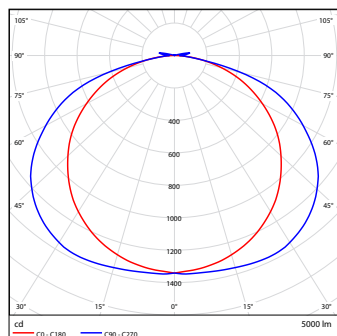
Photobiological risk assessment is maximum group 1. The product is considered safe, does not pose any photobiological hazard

\*not on DOC

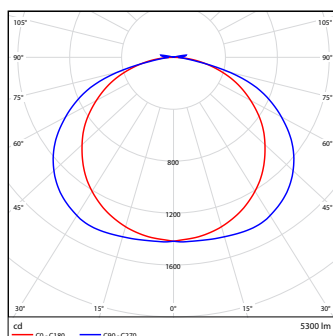
## Photometric data - 4000K



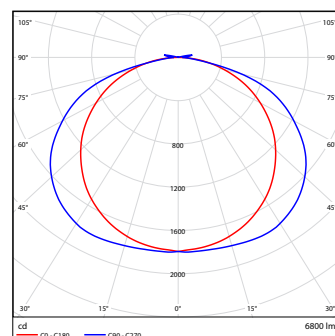
30W - 4000lm



38W - 5000lm



40W - 5300lm



50W - 6800lm

Only for indicative purpose. For lighting design, please use the ldt photometry files available for the products.

## Order logic

Internal Code	Wattage	Length	Light color (CRI + CCT)	Control	Mounting	Other
TU LINEAR INDIRECT	30W 38W 40W 50W	12 - 1250 mm 16 - 1650 mm	830 - 80 CRI, 3000K 835 - 80 CRI, 3500K 840 - 80 CRI, 4000K	S - Static D - Dali with push dim	11 - Standalone	G1B - Generation identifier

**Example:** TU LINEAR INDIRECT 50W 12 835 S11 ST

Standalone 1450mm long Linear Indirect fixture 50W 80 CRI 3500K CCT with static control