



LED Integrated Mariner - Start



Product information

This fixture has an attractive, neutral aesthetics that makes it suitable for applications in both commercial, residential and industrial environments. It is an energy-efficient, low maintenance alternative to traditional fluorescent waterproof fixtures.

Features

- High performance with 6 lumen packages – up to 100 lm/W
- 30 000 hours lifetime (L70B50)
- 2 colour temperatures: 4000 and 6500K with SDCM < 6
- Color rendering index > 80
- Linear luminaire with high protection rating (IP65) and high impact resistance (IK08) make integrated LED mariner the ideal solution in challenging ambient conditions
- Suitable for operation in ambient temperature of -20°C to +25°C
- Integrated through-wiring 3x1mm²
- Easy connection solution on both ends of the fixture to allow single fixture or continuous fixture installations for EU versions
- Samsung LED chip
- Static built-in driver
- Power factor: 0.5 on 2ft and 4ft low lumen package and 0.9 on 4ft high lumen and 5ft
- Supply Voltage: 220-240V 50/60Hz
- High (850°C) Glow wire temperature
- Certificates: CE & CB issued by TÜV
- Insulation Class I
- Cannot be used in corrosive environment

Benefits

- Energy class A+
- Energy savings of up to 50% (compared to luminaires that use fluorescent lamps)
- Uniform light
- Convenient, continuous connection for both sizes of 600mm, 1200mm and 1500mm, simple and easy installation options
- High resistance against ambient air with humidity and high particle loads
- Simple refurbishment solution thanks to use of existing installation points
- Fast and simple installation due to easy connection design

Application areas



Industrial



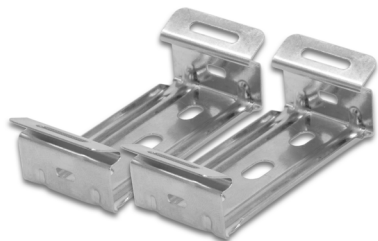
Car park



Retail

Structures and materials

- Impact-resistant, polycarbonate housing and cover
- UV stabilized, flame retardant polycarbonate with improved light transmission and good color stability under heat exposure
- Colour: grey
- Convenient assembly bracket for ceiling mount, also opportunities for wall mounting with metal parts
- Small size profile and lightweight design
- All accessories for fixing are included in the package:



Wall mounting metal is 304 stainless steel
Kits are packed to ensure end users can fix the fixture
Fix to the ceiling: 2pcs wall mount clips plus 4pcs of screws

Electrical connection

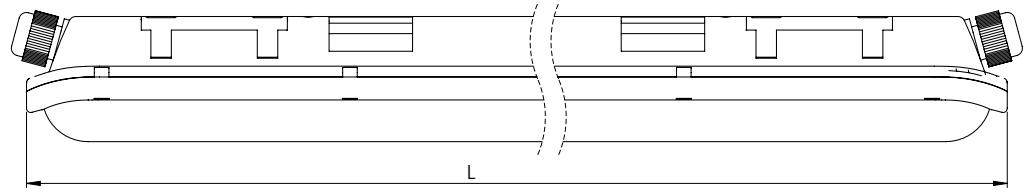
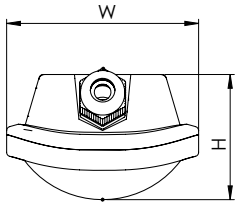
- Cable entry for cables D=6-9mm
- Option for continuous connection up to 10pcs, depends on short circuit breaker

Specification summary

Product code	Description	Wattage (W)	Lumen (lm)	Efficiency (lm/W)	CCT (K)	Current (mA)	Power Factor	Direct Shipment pairs*	Replacement for LFL	Weight (kg)
93092699	LED Mariner ST G1 GE 2' 12W 840 S EU	12W	1200lm	100	4000	90	0,5	93090165	1x18W	0,7
93092700	LED Mariner ST G1 GE 2' 12W 865 S EU	12W	1200lm	100	6500	90	0,5	93090167		0,7
93090163	LED Mariner ST G1 GE 2' 24W 840 S EU	24W	2400lm	100	4000	166	0,5	93090166	2x18W	0,8
93090164	LED Mariner ST G1 GE 2' 24W 865 S EU	24W	2400lm	100	6500	166	0,5	93090168		0,8
93092701	LED Mariner ST G1 GE 4' 24W 840 S EU	24W	2400lm	100	4000	164	0,5	93090169	1x36W	1,3
93092702	LED Mariner ST G1 GE 4' 24W 865 S EU	24W	2400lm	100	6500	164	0,5	93090170		1,3
93088134	LED Mariner ST G1 GE 4' 48W 840 S EU	48W	4800lm	100	4000	216	0,9	93088135	2x36W	1,7
93089020	LED Mariner ST G1 GE 4' 48W 865 S EU	48W	4800lm	100	6500	216	0,9	93089021		1,7
93092703	LED Mariner ST G1 GE 5' 28W 840 S EU	28W	2800lm	100	4000	134	0,9	93090171	1x58W	1,7
93092704	LED Mariner ST G1 GE 5' 28W 865 S EU	28W	2800lm	100	6500	134	0,9	93090172		1,7
93089017	LED Mariner ST G1 GE 5' 56W 840 S EU	56W	5600lm	100	4000	254	0,9	93089018	2x58W	2,0
93089023	LED Mariner ST G1 GE 5' 56W 865 S EU	56W	5600lm	100	6500	254	0,9	93089024		2,0

* Screw type connector

Dimensions (mm)



Length	Lumen package	Width (mm)	Length (mm)	Height (mm)
2ft = 600mm	low - 1200lm	72	600	58
2ft = 600mm	high - 2400lm	92	600	60
4ft = 1200mm	low - 2400lm	72	1200	58
4ft = 1200mm	high - 4800lm	92	1200	60
5ft = 1500mm	low - 2800lm	72	1500	58
5ft = 1500mm	high - 5600lm	92	1500	60

Regulatory and standards

Regulatory mark: CE

Regulations: 2014/35/EU, 2014/30/EU, 2011/65/EU, (framework 2009/125/EC) EU/1194/2012 and EU/2015/1428, (framework 2010/30/EU) EU/874/2012 and EU/518/2014*, 2012/19/EU*

3rd party performance test report supports compliance to EU/1194/2012

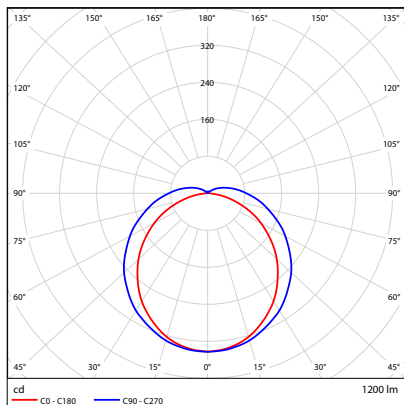
Harmonized standards: EN 60598, EN 62493, EN 61547, EN55015, EN 61000,

look for CE Declaration of Conformity and Technical File for details

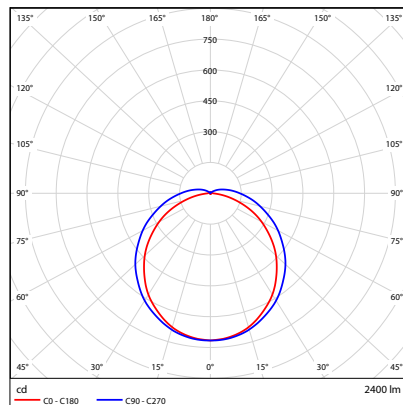
Photobiological risk assesment group 0 (exempt). The product is considered safe, does not pose any photobiological hazard.

*not on DOC

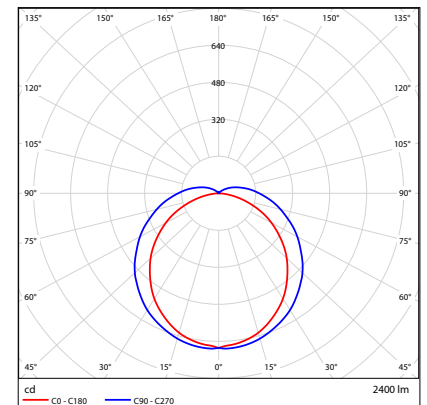
Photometric data



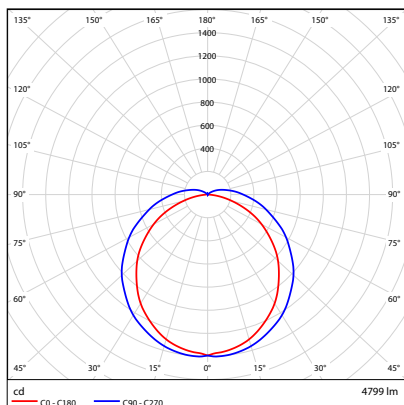
2' 12W



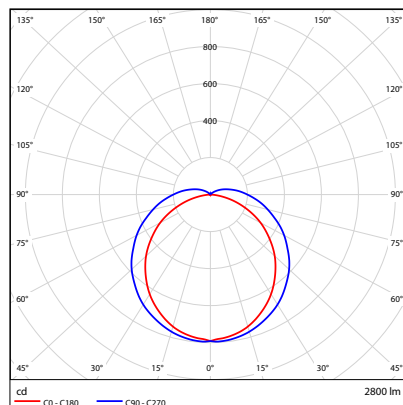
2' 24W



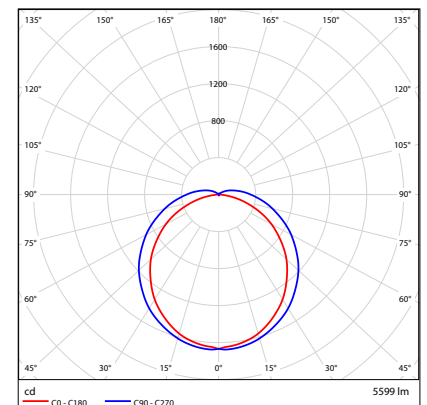
4' 24W



4' 48W



5' 28W



5' 56W

Photometry is based on LM79

NVLAP LAB CODES: 200651-0, 200660-0

Order logic

Internal Code	Range	Generation	Brand	Length	Wattage	CRI	CCT	Controller	Shipment
LED Mariner	ST = START	G1 = Generation 1 G2 = Generation 2 GX = Generation x	GE = GENERAL ELECTRIC TU = TUNGSRAM	2' = 2ft 4' = 4ft 5' = 5ft	12W 24W 28W 48W	7 = 70 CRI 8 = 80 CRI	40 = 4000K 65 = 6500K	S = Static	DS = Direct Shipment TRDS = Direct Shipment Turkey EU = EU connector EUDS = Direct shipment + EU connector

Example: LED Mariner ST G1 TU 2' 12W 840 S TRDS